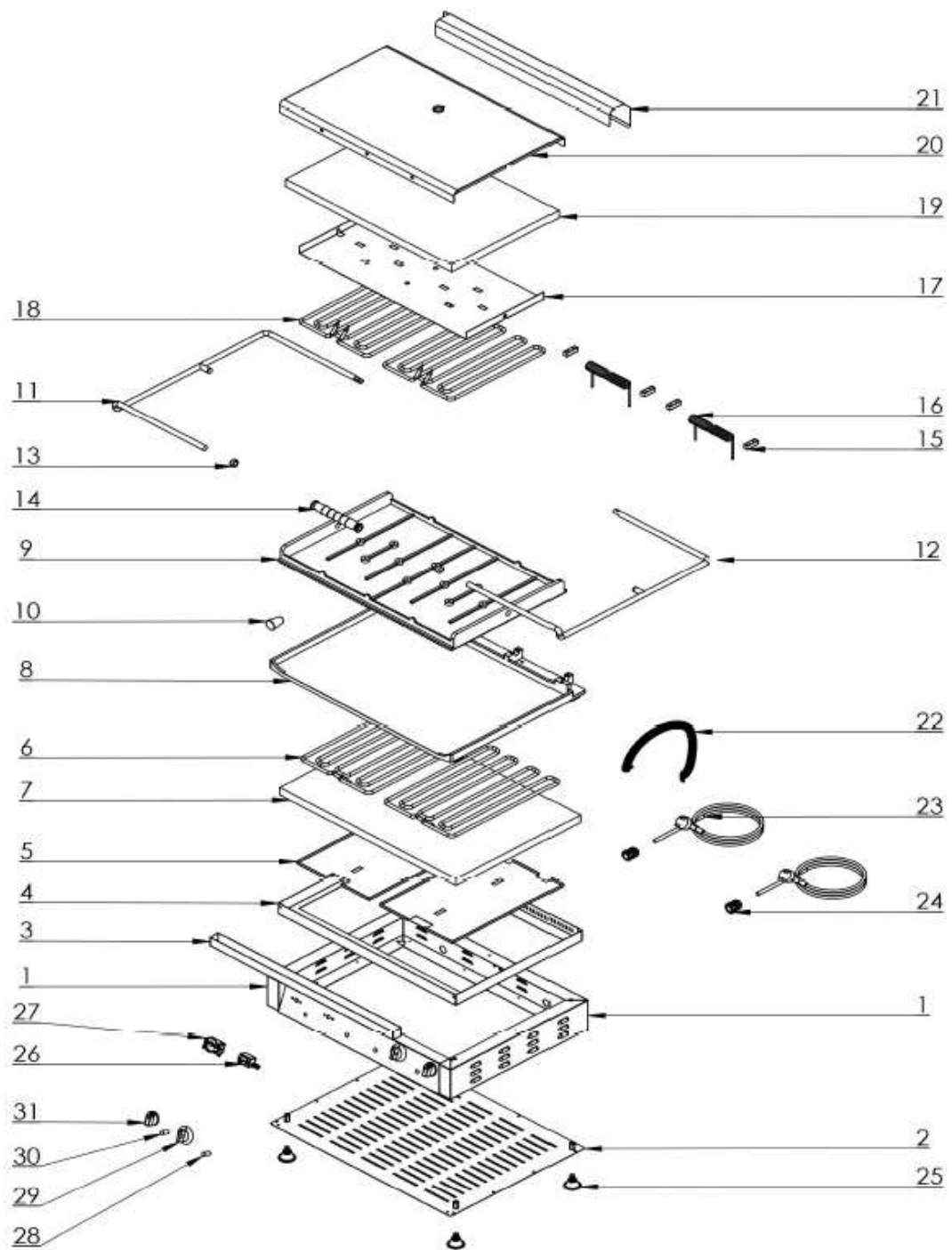



ГРИЛЬ КОНТАКТНЫЙ TATRA TCG 6040 RS DT



| | | | |
|--|--|--|--|
| | | | |
| | | | |
| | | | |
| | | | |

ГРИЛЬ КОНТАКТНЫЙ TATRA TCG 6040 RS DT

| | | | |
|----|---------------------------|--------|---|
| 1 | POWER SWITCH LAMP | HM1685 | 1 |
| 2 | TERMOSTAT BUTTON | HM0005 | 2 |
| 3 | FEEDING CABLE SOCKET | HM0293 | 1 |
| 4 | RIGHT ARM | HM2374 | 2 |
| 5 | FEET | HM0285 | 2 |
| 6 | THERMOSTAT | HM2376 | 1 |
| 7 | CABLE PROTECTION | HM0086 | 1 |
| 8 | FEEDING CABLE | YM3074 | 4 |
| 9 | UPPER COVER | YM3072 | 2 |
| 10 | REAR COVER | HM2367 | 2 |
| 11 | UPPER RESISTANCE | HM0029 | 1 |
| 12 | UPPER INSULATION | HM2377 | 1 |
| 13 | TOP COVER SPRING | YM3073 | 4 |
| 14 | UPPER RESISTANCE HOLDER | HM0292 | 1 |
| 15 | HANDLE | HM1682 | 1 |
| 16 | TOP COVER BREAKING | HM0027 | 2 |
| 17 | TOP COVER SMALL HANDLE | HM1688 | 1 |
| 18 | HANDLE CONNECTION ELEMENT | HM2375 | 1 |
| 19 | LEFT ARM | HM0029 | 2 |
| 20 | LOWER INSULATION | HM2285 | 1 |
| 21 | LOWER CASTING | HM2290 | 1 |
| 22 | UPPER CASTING | YM3063 | 1 |
| 23 | LOWER RESISTANCE HOLDER | YM3068 | 2 |
| 24 | FRAME | HM2368 | 2 |
| 25 | LOWER RESISTANCE | YM3075 | 1 |
| 26 | MAIN BODY | YM3066 | 1 |
| 27 | LUBRICATOR | YM3065 | 1 |
| 28 | LOWER COVER | HM0294 | 2 |
| 29 | POWER SWITCH | HM2378 | 2 |
| 30 | POWER SWITCH BUTTON | HM0021 | 2 |
| 31 | TERMOSTAT LAMP | HM0026 | 2 |

| | | | | |
|--|--|--|--|---|
| | | | |  |
| | | | | |
| | | | | |
| | | | | |